

Winners' Guide

Advancing Healthcare Awards UK 2023

Innovation | Creativity | Leadership | Compassion

Celebrating the winning entries,
presented on 21 April 2023

OVERALL WINNER



Let's Get Sure Start Singing

Karen Diamond, Music Therapist, Diamond Music Therapy Services
and Anne McKee, Lead Speech and Language Therapist
for Sure Start Belfast Health and Social Care Trust

THE JUDGES COMMENTED:

“ They developed an initiative that may seem like a simple fix, but makes a huge difference to children and their parents' mental health and wellbeing. The impact was summed up simply that 'as a parent you are your babies' favourite rockstar!

”

READ MORE ON P12

Congratulations to all our winners and finalists

Welcome to the work of the finalists of the 2023 UK Advancing Healthcare Awards for allied health professionals, healthcare scientists and those who work alongside them.

The UK Advancing Healthcare Awards ceremony was held in London at the Park Plaza Victoria on 21 April, during which we celebrated the achievements of our finalists and heard from many inspirational speakers throughout the afternoon. This guide is a testament to the incredible work of our entrants and their wider teams; as always, we are proud to share the experience and learning as widely as possible.

We achieved over 170 entries this year, which is outstanding – and made for some very difficult decisions in the judging stages. It is a real tribute to the passion, dedication, and innovation of healthcare scientists, AHPs and those who work alongside them across the UK.

A special thank you to our sponsors who not only provided financial support but helped us with the huge task of judging. These organisations are:

- The Academy for Healthcare Science
- The British Association of Prosthetists and Orthotists
- Chroma
- Institute of Biomedical Science
- The British Association for Music Therapy
- The Welsh Government
- Synnovis
- Department of Health, Northern Ireland
- The Royal College of Podiatry

We went virtual with the judging again to make it as time-efficient as possible for our busy judges and finalists. The judges found the experience to be inspiring and challenging, selecting winners from so many outstanding entries. This Winners' Guide summarises the work of the finalists and gives contact details should you wish to follow up any of the projects.

Entries for 2024 will open in the Autumn; meanwhile you can take a look at our 2023 stars.



Alison Dunn & Will Chamberlain-Webber
Joint managing directors Chamberlain Dunn
April 2023

Our Winners' Guide is a vital part of the Advancing Healthcare Awards programme. We are proud of it for (at least) four reasons:

- 1** It gives participants, guests, entrants and the wider healthcare world a chance to digest more fully the work of the finalists
- 2** It is a more permanent record of the achievements of AHPs and healthcare scientists across the UK in 2023 than an awards ceremony can ever achieve
- 3** It gives contact details for those wanting to find out more to build on their own work and to share experiences
- 4** It helps us to stand out from the crowd – very few award organisers take the trouble to deliver this final piece of the jigsaw.

If you would like to be involved in the Advancing Healthcare Awards as a sponsor, judge or simply share some ideas about how we can develop the programme, please contact Ellie Hayden on ellie@chamberdunn.co.uk or call 020 8334 4500



Llywodraeth Cymru
Welsh Government

The Welsh Government's award for value based care: making best use of resources to maximise outcomes

WINNER

Cardiff and Vale Rehabilitation Model

CAV rehabilitation model team – led by Dr Emma Cooke, Deputy Director of Therapies and Healthcare Science, Cardiff and Vale University Health Board

The team provide a recovery focused rehabilitation model to guide the co-creation of structures and interventions to meet local population needs. The model aims to optimise health and support self- management, focusing on addressing health inequalities, through a growing range of co-produced and co-delivered community interventions available in multiple formats.

The co-production forum brings together not only the voices, but also actions and contributions of service users, the Third Sector, community and healthcare to achieve a common goal. The integrated teams, which include growing numbers of healthcare and peer support workers, are developed, trained and supported jointly with leisure services and National Exercise Referral Scheme including Greenwich Leisure Limited, Welsh National Opera, Swim Wales, Welsh Athletics. Working across traditional boundaries, the group

interventions add therapeutic and sustainability value, addressing loneliness and community support associated with health inequalities, while reducing delivery costs.

Together, the team are providing non-medicalised, health generating care, delivered closer to home with transition to sustainable long-term community led solutions.

“ A ground-breaking piece of work, which not only had a big impact on patients, but also offered ideas and inspiration for developing other areas of practice ”



FIND OUT MORE

Emma.Cooke@wales.nhs.uk

robert.letchford@wales.nhs.uk

FINALISTS



Value Based Integration: Enhanced Community Services for care home residents by Allied Health Professionals

Sheiladen Aquino, Clinical Lead Speech & Language Therapist, Tom Sauter, Clinical Lead Pharmacist, Lucy Marland, Highly Specialized Care Home Lead Dietitian, Amber McCollum, Highly Specialist Speech & Language Therapist and Jodie Miller, Speech & Language Therapy Associate Practitioner, Cwm Taf Morgannwg University Health Board, Bridgend Community Services

This project presents a holistic and integrated way of providing care home residents with swallowing, nutrition, and medication management. To contribute to a prudent, sustainable and equitable service, the multi-disciplinary team at Cwm Taf Morgannwg, Bridgend Community Services co-designed a single point of access between three allied health professionals to deliver a joint remote consultation with care home staff. They also provided multidisciplinary training to manage risks, mitigate further deterioration and ensure consistency of practice to deliver seamless person- centred care.

Sheiladen.Aquino2@wales.nhs.uk



The elephant in the room

Myra Robson, Clinical Lead – Bladder, Bowel & Pelvic Health team, Lewisham & Greenwich NHS Trust

Myra leads a newly integrated team of nurses and physiotherapists across two acute hospitals and the connected community service. Since taking the role of clinical lead, four years ago, Myra has:

- Provided a comprehensive selection of patient reviews
- Developed extensive clinical pathways
- Initiated a QI project to spread self-referral from one to three sites
- Initiated three monthly, whole team training days and a team library
- Established a Twitter profile for the service and widely promoted the work of the service.

myra.robson@nhs.net

The award for outstanding achievement by an apprentice, support worker or non-registered technician in an AHP or healthcare science service

WINNER

Lorraine Allchurch

Lead AHP Support Worker, The Dudley Group NHS Foundation Trust

Lorraine has forged ahead in developing the lead AHP support worker role; she is the first non-registered member of staff to move into a leadership role and captures the voice of her fellow support workers. She has led key initiatives, including:

- The introduction of the care certificate for AHP support workers, to demonstrate that the service has a skilled and competent support workforce, and to also ensure that this is contextualised for AHP support workers
- The delivery of the first AHP support worker study day to celebrate and inspire AHP support workers
- System- wide AHP Day awards for AHP support workers.

Lorraine takes every opportunity to share best practice at a regional and national level with other lead AHP support workers through forums or separate meetings via faculties and learning from others, and continues to ensure that her colleagues have opportunities to develop and grow, as well as feeling valued, celebrated and recognised.

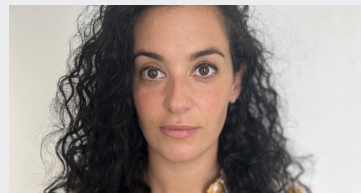
“ Lorraine embodies outstanding influencing skills and is trailblazing an energetic approach to raise the profile of the non-registered workforce ”



FIND OUT MORE

lorraine.allchurch@nhs.net

FINALISTS

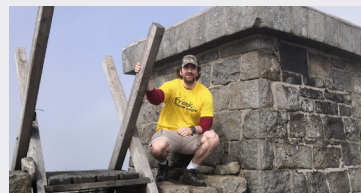


Lidia Gonzalez-Lopez

Associate Practitioner in Point of Care Testing, Frimley Health NHS Foundation Trust

The training team at Frimley Health delivers face to face training on point of care testing devices to hundreds of multi-disciplinary clinical teams each month across partnered Trusts. Lydia used her initiative to devise training materials that included the local needs of each partnered Trust, placed it into one central document and employed project management skills in order to maintain momentum while engaging key stakeholders to achieve key milestones.

lidia.gonzalezlopez@nhs.net



Joe Sirichas

Physical Activity Coach for Cancer Patients, Belfast Health and Social Care Trust

This project implemented virtual classes and one-to-one sessions as a way to do exercise with patients and to improve patient participation. The virtual classes have enabled a patient to go through the whole cancer journey with exercise being a part of it. The project has provided individuals from all parts of Northern Ireland with a cancer diagnosis the opportunity to partake in physical activities, and supported people to lead healthier lifestyles, as well as offering bespoke pre-habilitation/rehabilitation sessions.

jsirichas@gmail.com



Elifcan Topsogut

Senior Associate Practitioner, Frimley Health NHS Foundation Trust

Elifcan has initiated innovative working practices for documenting staff availability and introduced and refined electronic remote monitoring of stock for all items used in the service across the five remote sites to improve stock management for the network. These initiatives and effective leadership led to the provision of rapid respiratory test results for ED admissions across five hospitals around the clock.

elifcan.topsogut@nhs.net

The Academy for Healthcare Science award for inspiring the healthcare science workforce of the future

WINNER

Victoria Heath

Deputy Trust Lead Healthcare Scientist, Great Ormond Street
Hospital for Children NHS Foundation Trust

Victoria has produced a training programme for developing transferable skills for healthcare scientists not currently covered by education providers and difficult to cover in local training departments. The training, termed 'mind the gap: transferrable skills training', allows for centralisation of resources to take strain from individual departments and provides the opportunity for networking and sharing best practice between scientists in different specialisms.

Victoria received £3,250 funding to run science comedy training sessions and host healthcare science comedy shows. Communication is arguably the single most important skill in healthcare and being able to entertain an audience is useful in leadership as well as outreach and engagement to support careers work with schools. Victoria recognised a gap in the education of healthcare

science and worked hard to provide a training programme to fill that gap in an equitable and accessible way. This has the potential for national level roll out to support workforce pressures without the burden being solely on local departments and training officers.

“ Victoria goes beyond the boundaries of the role and seeks out new ways of working, bringing people together and leading by example. ”

FIND OUT MORE

Victoria.Heath@gosh.nhs.uk

FINALIST



Katrina Oates

Principle Respiratory Physiologist, Regional
Healthcare Science Workforce Lead, Lead
Healthcare Scientist, Health Education
England, East of England

Katrina is a modest individual who quietly creates remarkable waves across the healthcare science landscape in the East of England. She has been involved in shaping the careers of countless healthcare scientists and has worked tirelessly to advocate and raise the profile of healthcare science at the highest possible levels. Katrina has been instrumental in supporting funding to organisations across the East of England to recruit and support training of healthcare science Apprenticeships. The first pilot year in 2022 saw the recruitment of just four cardiorespiratory apprenticeships; this year, with Katrina's efforts, the number of apprenticeships is over ten times higher.

Katrina.Oates@hee.nhs.uk

SPECIAL RECOGNITION AWARD

LSI Accredited Credentialing Register award for NHS - life science industry collaboration in delivering healthcare

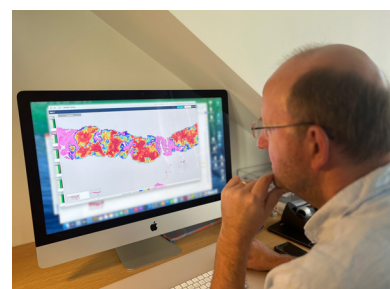
Life Science Industry representatives work alongside healthcare scientists and are often key sources of innovation and development. To get this new award off the ground this year, we are making one special recognition to help spread the word about this important support function, in order to attract many more entries next time.

EKHUFT Digital Pathology Partnership

Source LDPATH team, Source LDPATH

The services covered the pathology department at East Kent to convert it to a digital set up, in order to reduce turnaround times significantly and allow clinicians and patients to receive their results and therefore access to treatment as quickly as possible. This partnership has reduced turnaround times to

approximately 2 days and also removed the requirement for physically shipping glass slides between locations, reducing chances of slide damage or loss and reducing the carbon footprint. Wider adoption of these systems will help with the immense backlogs seen across the UK.



The Northern Ireland government's award for partnering, leading, shaping for population health **WINNER**

Northern Ireland Ambulance Service Complex Case Team

Joanna Smylie, Complex Case Manager, Aidan McDonnell, Claire Hallowell, Alan Moore and Debbie Greene, Complex Case Officers, Northern Ireland Ambulance Service

The NIAS Complex Case Team (CCT) seeks to address the needs of Frequent Callers and the subsequent impact this cohort has on service provision. The CCT engages with Frequent Callers, establishes appropriate care pathways with statutory and voluntary organisations, using a multidisciplinary approach, with ubiquitous benefits for patients and stakeholders.

Using a person-centred approach, services work together to ensure that the person's root needs are being addressed, and, at the same time, reduce the demand being placed on the emergency services and unscheduled care services collectively. This method of engagement with a small 'test cohort' of 20 service users led to significant reductions in calls, ambulance responses, ED admissions and costs to the service.

While cost-effective, for CCT staff the importance of the financial savings pales in comparison to hearing quotes such as; "NIAS have played a huge part in... helping me when I was at my lowest ebb" and "You have turned my life around".

“ Clearly articulated impact with a vision for future development and investment - an impressive project driven by passionate individuals working as a team. ”



FIND OUT MORE

Joanna.Smylie@nias.hscni.net
Aidan.McDonnell@nias.hscni.net

FINALISTS



Dietetic led fortified drinks initiative to reduce oral nutritional supplement prescriptions in care homes

Sarah Russell, Advanced Practice Care Home Dietitian, AHP Care Home Support Team and Ashleigh Mills, Interim Clinical Co-Ordinator, Community Nutrition and Dietetics Department, South Eastern Health and Social Care Trust

This project involved a designated Advanced Practice Care Home Dietitian working with care home staff and residents to establish a fortified drinks initiative which improved food fortification techniques, reduced oral nutritional supplement prescriptions, reduced taste fatigue and reduced supplement wastage while maintaining residents' nutritional status.

Sarah.Russell2@setrust.hscni.net

AshleighMills@setrust.hscni.net



Design and implementation of a Regional Multi-disciplinary Foot Pathway to provide equity of access to services, timely intervention and improved outcomes for people living with diabetes in NI

Bronagh Monaghan, Consultant Podiatrist in Diabetes, Belfast Health and Social Care Trust, Denise Killough, Diabetes Project Lead, Belfast Health and Social Care Trust, Pete Burbidge, Head of Podiatry Services, South Eastern Health and Social Care Trust, Denise Russell, Head of Podiatry Services, Southern Health and Social Care Trust, Eileen Dolan, Interim AHP Lead, Western Health and Social Care Trust, Alison Campbell-Smyth, Assistant Director Community Care, Northern Health and Social Care Trust

This project involved the design and implementation of a regional foot pathway which has transformed diabetic foot health services for the population of Northern Ireland. A podiatry-chaired multi-professional, multi-Trust task and finish group was established to review diabetic foot services across Northern Ireland, formulate a pathway, secure funding and implement a response improving diabetes foot health at population level. The success of this project required a comprehensive systems change, reviewing structures and processes, measuring outcomes. This transformation has fostered multidisciplinary working, ensured equity of access and improved outcomes for people living with diabetes.

Bronagh.Monaghan@belfasttrust.hscni.net

The Academy for Healthcare Science award for clinical research practitioner leadership

WINNER

Sarah Taylor

Research Manager - Complex Pathways, University College London Hospitals NHS Foundation Trust

In 2018, Sarah was appointed as a senior CTP and Team Lead, managing, training and inspiring her team to become the service's highest recruiters. During the pandemic Sarah acted up as a Research Manager providing leadership and reassurance during great uncertainty and in 2022 was appointed as the Research Manager for Complex Pathways.

As the Complex Pathways Research Manager, Sarah oversees the Cell Therapy, Proton Beam and Paediatric/ Teen and Young Adult portfolios. She has developed patient pathways in solid tumour cell therapy and PBT, both new areas of research, and is leading on an innovative programme developing automated data transfer from electronic records direct to sponsor's case report forms, working with an array of industry partners.

Through working with Sarah, the service has been able to develop the career path, responsibilities, education and support for CRPs. She is committed to continuous improvement, and patient-focused, keeping them and their families at the forefront of her and her teams minds but also showing equal care and compassion for her staff.

“ Sarah is a changemaker in a profession where it is hard to be heard; she is creating visibility for an emerging profession and is an embodiment of true leadership. ”



FIND OUT MORE
sarah.taylor83@nhs.net

FINALISTS



Georgia Melia

Research Practitioner, Nottingham University Hospitals NHS Trust

Georgia led and worked on a number of urgent public health research studies during the pandemic, winning the Covid-19 Research Hero Award and fundraising nearly £700 for the Covid Research Appeal. She is also an advocate and leader for Clinical Research Practitioner professions working on both local and national CRP leadership forums. Over the last few years, Georgia has achieved consistent recruitment to target in clinical research studies across multiple specialities and has delivered the highest recruitment numbers in the country for the ROWTATE research study.

Georgia.Melia@nuh.nhs.uk



Caroline Winckley

Senior Clinical Research Practitioner, National Institute for Health and Care Research: Clinical Research Network Greater Manchester

Caroline has been leading on the Genes and Health study, which involves recruiting people of Pakistani and Bangladeshi heritage, inviting them to provide a saliva sample and complete a health questionnaire. This data has contributed to identifying better treatments and improving health outcomes in these communities. These are communities who are underrepresented in research and therefore engaging them and encouraging them to participate in research has been a significant achievement. Caroline, with support from her team, has recruited over 580 people this year from across the region.

caroline.winckley@nhr.ac.uk

Rising Star award sponsored by Chamberlain Dunn



Amber Varden, operating department practitioner, George Elliot Hospital NHS Trust

Amber has embraced her role as an Operating Department Practitioner; she is excellent with patients when they are at their most vulnerable. She fits into any team she works with and is well respected by her peers, colleagues and the wider multidisciplinary team.

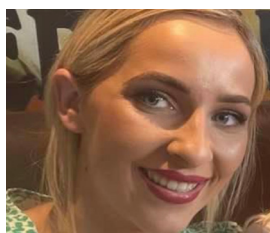
amber.varden@geh.nhs.uk



Carl Onwochei, Biomedical Scientist, Public Health Wales

Carl has quickly excelled in his role, qualifying in March and already working towards his specialist diploma. He has a genuine passion for the service delivered and about the health and wellbeing of the patients he serves, which is reflected in his commitment to his job and his dedication to sacrificing a great deal of his personal time to support the service where needed.

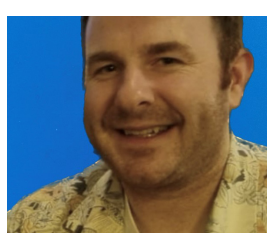
carl.onwochei@wales.nhs.uk



Aoife McGrattan, Podiatrist, South Eastern Health and Social Care Trust

Showing enormous resilience, and a team player with the skills and initiative to undertake any task, Aoife has become an integral part of the podiatry team; patients and colleagues alike respect her passion, dedication, and quiet and efficient manner.

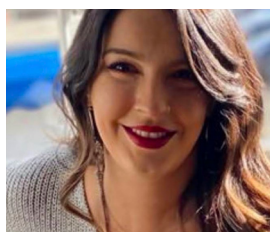
aofe.mcgrattan@setrust.hscni.net



Lewis Mackay, Advanced Practitioner Occupational Therapy Digital Leadership and Transformation, NHS Lanarkshire

Lewis is known as the 'go to' for all matters digital and his reputation across the service at all levels has rapidly grown. He brings mastery in bridging the gap from technology to reality for staff, intuitively understanding the needs of colleagues and how to translate technical language into easily understood solutions.

Lewis.Mackay@lanarkshire.scot.nhs.uk



Priya Vithani, Senior Music Therapist, North London Music Therapy CIC

Priya has stepped up to every hurdle fearlessly. Working in a small team within NLMT during the pandemic, Priya immediately stepped into a leadership role, designing and developing training for other professionals, running NLMT's comms and social media and onboarding new clients. Colleagues praise her work ethic, willingness to learn new skills and her sensitive clinical work.

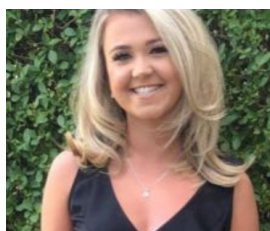
priya@northlondonmusictherapy.com



Joseph Cox, Dietitian, Powys Teaching Health Board

Joseph has embraced his role supporting dietetic input to wards, digital outpatients and care homes, and shows a strong drive to develop, collaborate, and be an ambassador for the profession. He continues to show initiative to develop his clinical and leadership skills, and has quickly become a well-respected and trusted member of the team.

Joseph.Cox3@wales.nhs.uk



Sophie Mitchell, Deputy Clinical Lead Orthotist, OpCare

Sophie keenly understands the social and psychological effect that physical disability can have on patients, and works in a holistic way to help patients achieve their goals. She will take on any challenge and not only deliver the outcome required but always exceeds expectations, showing initiative beyond her experience level.

sophie.mitchell@uhcw.nhs.uk



Clara Blackall, Specialist Learning Disabilities Dietitian, Hertfordshire Partnership

Clara is willing to take on any challenge, and hence she has developed excellent multi-disciplinary team-working skills and knowledge which are valued in the service. Clara has shown exemplary clinical skills and strives to find the best outcome for all her patients, as well as supporting other staff members to learn about their own health and wellbeing.

Clara.Blackall@nhs.net



Joe Maslen, Apprentice Radiotherapy Assistant Practitioner, Imperial College

Since day one, Joe has excelled in his role. He is extremely motivated to both develop professionally as well as wanting to support service development, improve the patient and staff experience. Joe brings fresh ideas and passion in everything he does, putting the patient at the centre to improve outcomes.

joemichael.maslen@nhs.net



Ejay Nsugbe, Healthcare Scientist

Ejay has shown scientific entrepreneurship by founding Nsugbe Research Labs, where he has assembled an international multidisciplinary team working on the application of AI technology to provide clinical innovation. He is viewed by peers and collaborators as a budding visionary with leadership acumen, who has showcased out of the box thinking that has led to successful project collaborations.

ennsugbe@yahoo.com

See page 14



Partnership Arts Therapies Placement Development Project

Paula Hedderly, Arts Therapies Placement Development Lead, Central and North West London NHS Foundation Trust and **Phoene Cave**, Arts Therapies Placement Development Lead, East London NHS Foundation Trust

SPECIAL RECOGNITION

This is an important initiative to boost the "supply side" of arts therapies training - the demand side has continued to grow year on year, and especially post-Covid. This project has expanded the clinical areas where trainee creative arts therapists can have placements, including young people with gaming disorders, homeless adults and those with crisis care pathways. They aim to increase visibility of arts therapies in new clinical settings, including partnership third sector organisations; and to meet growing demand for placements within higher education institutions.

paula.hedderly@nhs.net phoene@themusicalbreath.com



The British Association of Prosthetists and Orthotists Award for Inspirational Innovators in Prosthetics and Orthotics

WINNER

Inspirational innovator in orthotic footwear provision

Clara Bailey, Orthotist, Blatchford

Over the past 25 years, Clara has dedicated her career not just to treating patients, but also to teaching and mentoring junior orthotists. Clara practices within the general field of adult orthotics in the Northern General Hospital, Sheffield, with specialist skills and leadership in the provision of orthotic footwear. She also has the role of footwear lead within Blatchford, where she is responsible for delivering footwear training courses to all graduates and orthotists.

Her distinguished expertise has been recognised within Blatchford, where she provides mentorship and troubleshoots for services with complex footwear issues. In 2022, Clara's footwear training was CPD accredited and will now be open to external candidates, furthering

Clara's drive to ensure all those who need specialist footwear receive the very best of care in the UK. Clara contributes to the development of the profession, continually innovating in an area of orthotics often unsung, making a huge difference to the lives of so many.

“ Impressive impact on clinical practice, research and product design, and through this, the quality of life of the patients accessing orthotic services. ”



FIND OUT MORE

Clara.Bailey@blatchford.co.uk

FINALISTS

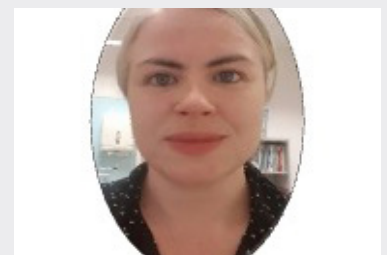


**Great Ormond Street Hospital (GOSH)
Craniosynostosis Treatment**

**Steve Mottram, Managing Director,
Technology in Motion**

Steve has now given the orthotics industry over 40 years of service, championing the value innovation can bring to treatment of Craniosynostosis. In recent years he has worked to revolutionise the treatment of Plagiocephaly and Craniosynostosis, playing a lead role within development and innovation for cranial remoulding. In 2020 Steve made a significant breakthrough when he developed and then oversaw the launch of a 3D printed cranial remoulding orthoses called the TimbandAir. Following a successful trial with Great Ormond Street Hospital, Steve has now also been successful in creating similar relationships and trials with trusts such as Alder Hey Hospital, Birmingham NHS Women and Childrens Trust and Oxford Craniofacial Team, positively influencing NHS strategy at both local and national level.

smottram@technologyinmotion.com



**Equality, diversity and inclusion and
mental health and wellbeing**

Gemma Cassidy, Orthotist

Gemma has inspired the prosthetic and orthotic profession by being a leading example of ensuring people are treated with equity and kindness, having worked for several years to improve EDI within the prosthetic and orthotic profession. Gemma has also taken a lead role in highlighting the importance of mental health and well-being within the profession. Gemma regularly delivers presentations to various stakeholders on these topics with the aim of educating, inspiring, and effecting change.

Gemma.Cassidy@bapo.com

The Biomedical Scientist of the Year award, sponsored by the Institute of Biomedical Science

WINNER

Ian Davies

Senior Lecturer in Biomedical science and Healthcare Science
Course Leader, Staffordshire University

Ian is a pioneer of biomedical scientist education through the early development, adoption, and leadership of degree apprenticeships at Staffordshire University. With 40 graduates already registered and working as biomedical scientists, and a further 130 students on the apprenticeship from over 25 NHS Trusts across England, Ian has worked with employers and professional bodies to revolutionise access to educational opportunities, developing sustainable talent pipelines to support the biomedical science workforce. Through the development of accessible routes to eligibility for HCPC registration as a biomedical scientist, Ian has also opened access to the profession to people from a wider range of backgrounds.

From working with the NHS COVID Testing Cell to deliver professional practice education, to innovative ways to deliver supplementary education, Ian is a scientist with healthcare at his heart.

“ Ian is a great leader, both as a role model and supporter of his students, which is perhaps best demonstrated by his empathetic approach to their differing backgrounds and needs. ”



FIND OUT MORE
I.Davies@staffs.ac.uk

HIGHLY COMMENDED



Lucinda Streeter

Point of Care Testing Manager, Hampshire Hospitals NHS Foundation Trust

Lucinda has shown extraordinary leadership in her role. Despite the pressure of the pandemic on pathology services, she has raised the profile, achieved contract efficiencies, introduced new equipment, trialled new POCT devices and rolled out rapid covid testing service across the Trust and multiple other sites. She also supported the national roll out of rapid covid testing by writing and sharing working instructions to allow other services to implement their own services at greater speed. Lucinda has built relationships within her Trust with clinical colleagues to improve the recognition and value of pathology support for point of care testing, including the formation of the POCT committee, improved access to training for new junior doctors and nursing staff and improving the digital transformation to ensure POCT results were reported into the electronic patient record.

Lucinda.Streeter@hhft.nhs.uk

FINALIST



Glenda Penfold

Point of Care Testing, Cross Site Manager, Frimley Health NHS Foundation Trust

Offering support to staff of all grades to achieve their objectives, Glenda is always looking for ways to overcome barriers and progress projects. After nearly 20 years in microbiology, she brought her skills and knowledge into POCT and has been pivotal in the exploration of POCT in the community and ambulances, piloting the LabKit POCT bag with South East Coast Ambulance Service in 2016. In the pandemic these skills were applied to the pioneering set up of 5 acute hospital Rapid testing facilities for Covid-19 and the recruitment of over 100 new staff into the Frimley Health pathology service. Working on Trust-wide projects, new builds and workforce initiatives, Glenda builds relationships that reinforce the role of healthcare scientists in a multidisciplinary approach to NHS healthcare.

glendapenfold@nhs.net

British Association for Music Therapy Award for music therapists who are developing innovative ways of providing effective music therapy **WINNER**

Let's Get Sure Start Singing

Karen Diamond, Music Therapist, Diamond Music Therapy Services and Anne McKee, Lead Speech and Language Therapist for Sure Start Belfast Health and Social Care Trust

This project was a new partnership initiative in nine Belfast Sure Start projects to increase the use of music and singing by parents and staff. Increased use of music aimed to improve parent child connection and therefore development of language, mental wellbeing of parents and confidence of parents and staff in using music. Resources include the online 'Message of the month' song videos to familiarise parents and staff with the concept of singing as fun; co-production of Belfast Lullaby with Sure Start midwives and antenatal mothers; co-production of songs for three 'Chat with Me' books with parents, Sure Start staff, graphic artists and nursery schools and music producer; and the facilitation of music sessions for parents, grandparents and staff.

The aim was to remove anxiety around singing, as well as demonstrate the many developmental benefits for babies and children, and to demonstrate the

enhanced relationships which can be developed between parents and their children.

Each input is evaluated using an impact and outcome document which the SLTs in Sure Start use, and this helps shape future work. The ultimate aim is for the project to provide long term sustainable change – staff and parents embedding singing and sharing the books with their children into everyday life. The programme has been successful in all aspects of delivery, with high engagement, positive feedback from parents, and strong stakeholder support.

“ Co-production is at the heart of this project ... an interprofessional approach, involving health, social care and education. ”



FIND OUT MORE

diamond.karen@outlook.com
AnneF.McKee@belfasttrust.hscni.net

FINALISTS



Connect With Me | Forging family, nursery, and health care alliance for holistic input and optimal impact in early intervention

Amanda Thorpe, Music Therapist Programme Evaluation Lead, The Breve Clinic, Eunice Costello, Team Manager and Programme Lead, and the team at Newham SEND Hub

Connect With Me (CWM) is an intensive multi-modality, relationship-based programme designed for nursery children identified with social communication needs and their parents. Allied Healthcare and Education professionals come together in one place to deliver effective and efficient support to children and their families when they need it most.

thebreveclinic@gmail.com

eunice.costello@ronaldopenshaw.newham.sch.uk



Intergenerational Music Making

Charlotte Miller, Director, Intergenerational Music Making

Intergenerational Music Making is the first music therapy organisation bringing together the old and young to tackle isolation, social exclusion and health inequalities, while improving the mental health and wellbeing of both generations through unique music therapy projects. The project involved ten Year 10 students from a large inner city secondary school with 17 identified residents from their local nursing/dementia care home. The project gave all residents a purpose to get up, get active, be involved in something purposeful while developing their confidence, emotional, physical and mental wellbeing. The project has shown that if the younger generations are taught to connect from an early age, to see and seek invisible groups within their community, they will be addressing their potential future isolation as well.

charlotte@imm-music.com

The Academy for Healthcare Science Award for Leadership in Healthcare Science

WINNER

Emma Walker

Organisational Lead Healthcare Scientist, Imperial College Healthcare NHS Trust

Emma believes in the positive impact that healthcare scientists can make given a platform and voice, and has demonstrated the organisational and patient safety benefits of having healthcare scientists at the top levels of an organisation.

She acts as a focus for the application of science across the Trust to improve patient care, ensuring the adoption of cost-effective practice and innovative technology in scientific services. She leads a community of 1,200 healthcare scientists at Imperial, and is a mentor for trust leads across London and the wider system. She has also secured funding for education and training for the HCS workforce and used her position to bring services together to deliver IQIPS and improve patient safety and experience Trust-wide. Emma has been tireless in her pursuit of establishing the leadership role at Imperial, holding the role unfunded for two years whilst she collected evidence and built the case for investment in a part-time, funded post

reporting directly to the CEO and Medical Director, all while maintaining her Consultant Clinical Scientist role in NW London Pathology.

“ Emma has championed the role of lead healthcare scientist, using her facilitation skills to support accreditation across the service, in a model that could be adopted everywhere. ”



FIND OUT MORE

emma.walker15@nhs.net

HIGHLY COMMENDED



Paul Thomas Lee

Medical Devices Training Manager and Deputy Head of MEMS, Swansea Bay University Health Board

Paul tackles areas of lack of funding and poor support and addresses shortfalls in teaching, device utilisation, and highlighting significant patient safety risks. The Medical Device Training team, led by Paul, is at the forefront of service development and targeted interventions. His vision and focus have led to new working methods, improved patient care and his focus on patient safety is instrumental in developing new initiatives, collaborative working and improvement programmes for medical device training, intravenous therapy and patient safety in the health board and nationally. His considerable drive and determination to succeed are exemplary, and he has been recognised locally and nationally with awards and publications. Despite many pressures, Paul continues to develop his service, takes on new challenges and leads from the front.

Paul.Lee@wales.nhs.uk

FINALIST



Keiran Joseph

Clinical Lead for Paediatric Audiology, Guy's and St Thomas' NHS Foundation Trust

Keiran's vision for the service is to become a world-renowned centre of excellence for paediatric audiology and newborn hearing screening and to improve the overall standard of the profession in the UK. Regionally, Keiran chairs the pan-London paediatric audiology heads of service meeting where he brings services together to create consensus on clinical aspects and use their combined voices to promote change. Nationally, Keiran was appointed to the board for the British Academy of Audiology. In this role he has lobbied for audiology workforce issues with the Chief Scientific Officer's office and NHSE Transformation Directorate.

Keiran.Joseph@gstt.nhs.uk

The Chroma AHP Clinical Leadership Award

WINNER

Catherine Cawley

Clinical Specialist Speech and Language Therapist,
Royal United Hospital, Bath

Catherine's vision was to provide 'Gold Standard' care for the assessment of patients with swallowing difficulties through the introduction of a new Fiberoendoscopic Evaluation of Swallow (FEES) assessment using endoscopy. The new service has allowed FEES assessment of patients throughout stroke, neurotrauma, neurology and critical care. The aim of this is to reduce the risk of starting nutrition orally, which may otherwise result in a chest infection, associated with higher rates of disability and death.

Catherine has dedicated herself to implementing this service, taking the initiative to raise £50,000 with the help of the Friends Charity at the Royal United Hospital while on her maternity leave and providing information included live webinars and magazine features. She has involved all stake holders across clinical engineering, the medical division, ENT, sterile services and infection control, and now trains the

wider team in FEES to implement her vision for prompter access to the service throughout the hospital. As a result of her clinical leadership, Catherine has ensured that patients on critical care with tracheostomies are able to be assessed using endoscopy in order to avoid harm and improve safety.

“ Impressive use of skills and knowledge from a previous role to identify a patient pathway to reduce the risk of harm to a cohort of vulnerable patients, with robust evidence of transferability and scalability. ”



MSK Partnership Group

Amanda Hensman-Crook, Consultant Physiotherapist, Ambleside Health Centre and Helen Welch, Consultant Physiotherapist, Belfast Health and Social Care Trust

The aim of this project was to bring all MSK professions and sub-specialties together in the UK to agree on one MSK standard at advanced practice level, with a portfolio of evidence academically and application of that knowledge into practice. Amanda drove the vision forward, working with Health Education England to agree to funding the development of the MSK Partnership Group, pulling all MSK professions to co-produce the UK MSK AP standards. The project took three years in a step approach, requiring strong leadership, resilience and communication skills, as well as the ability to navigate embedded sensitivities across the MSK professions, and is now improving the quality and impact of MSK care across the care pathway.

amanda.hensman-crook@nhs.net

helen.welch@belfasttrust.hscni.net



Claire Madsen

Executive Director of Therapies and Health Science, Powys Teaching Health Board

Claire has dedicated herself to seeking and quality assuring the content for the NHS Wales Covid Recovery App as the executive Director of Therapies and Health Science (DOTH) lead for Long Covid services in NHS Wales. Claire's drive in this work led to the rapid development of services in each health board. As recognition grew of the numbers of people with Long Covid, Claire led the response in Wales to develop new services, creating an all-Wales leadership group and clinical service leader group. She consistently supported practitioners to learn and deal with the challenge of treating a new condition, with little underpinning evidence, ensuring staff had support to deliver the best possible services.

claire.madsen@wales.nhs.uk



FIND OUT MORE

catherine.cawley@nhs.net

Synnovis award for Innovation in Healthcare Science

WINNER

A novel AI-enable Cardiac Imaging Biomarker to guide management of heart failure

Haotian Gu, Clinical Senior Lecturer, and Philip Chowieneczyk, Professor of Clinical Cardiovascular Pharmacology, King's College London

Echocardiography is the most widely used imaging diagnostic tool for assessment of heart pumping function. The current gold standard measure of heart function, Ejection Fraction (EF), has, however, important limitations. During his PhD, Haotian developed a novel measure of heart pumping function by Echocardiography (called EF1) to improve diagnosis and management of patients with heart failure. With the funding support from the British Heart Foundation (Translational Award and Project Grants) and NIHR (ICA Clinical Lectureship), Haotian has refined and validated EF1 in several cardiac conditions including heart valve disease, Covid-19, heart failure and children with chronic kidney disease.

Since the invention of EF1, it has been recognised by world opinion leaders with high impact publications and eight prestigious awards from British Heart Foundation, British Society of

Echocardiography, British and Irish Hypertension Society, The Academy of Medical Sciences and NHS England Chief Scientific Officer in the last few years. The development of EF1 has a great potential for new understanding of physiology of heart function, improving diagnosis of heart failure without extra financial burden to NHS, improving patient outcomes and reducing cost. Since EF1 can be easily measured from standard echocardiography and with the development of AI, this novel measure can be derived in any standard clinical settings.

“ This project shows evident focus, direction and simplicity, along with the clear patient benefit and transferability. ”



FIND OUT MORE
haotian.gu@kcl.ac.uk

FINALISTS



Innovation to Point of Care Testing in the Community

Rakhee Surti, Point of Care Project Manager, Jess Dixon, Deputy PSM & Quality Manager and Jill Beech, Organisational Lead Healthcare Scientific Officer, Milton Keynes University Hospital & BLMK Integrated Care Board (Digital Team)

This innovative project is designed to work collaboratively with primary and secondary care. The POCT Discovery project was initiated to document key strategic recommendations for improving and digitally transforming POCT services within the primary care community. The aim was to propose the benefits to clinicians and patient communities ensuring a robust, quality, safe, and cost efficient POCT service was being adhered to. A number of audits at key GP practices produced evidential and significant findings of inconsistencies and gaps in POCT services with primary care vs secondary care. Adopting this project across the network is crucial to align POCT diagnostic services. By sharing the audits nationally, it will provide version and document control, so all involved in POCT diagnostics can adopt a risk-based strategy that is harmonised for quality towards patient care.

Rakhee.Surti@mkuh.nhs.uk



Shahid Muhammad Biomedical, Academic and Chartered Scientist, The Renal Patient Support Group (RPSG)

Led by Shahid, The Renal Patient Support Group (RPSG) and Kidney Disease and Renal Support (KDARs) for Kids are both evidence[1] based support platforms for paediatric and adult renal recipients in chronic kidney disease. Both initiatives have focused on efforts integrating healthcare and education. Retrospectively, both social media platforms have been implementing and following academic practices of those colleagues and peers to ensure rigour throughout kidney care practice. The platforms have expanded internationally as the 'go to' place evidencing science across kidney care, public health, and research practice.

shahid.muhammad1@nhs.net

THANK YOU TO ALL OF OUR JUDGES

Malcolm Robinson

Former Chief Biomedical Scientist, Western Sussex Hospitals NHS Trust, and Founder and Chairperson, Harvey's Gang

Peter Iliff

Chair, British Association of Prosthetists & Orthotists

Joanne Horne

Pathology Workforce Education Lead, Southern Counties Pathology (SCP) and TP Training Programme Director & Midlands Healthcare Science Dean, Health Education England

Daniel Thomas

Managing Director, Chroma

Katrina Kennedy

Associate Director of Allied Health Professionals, Hampshire Hospitals NHS Foundation Trust

Joanna Andrew

President Elect, Institute of Biomedical Science

Grahame Pope

Former Head of Physiotherapy and Rehabilitation, University of Nottingham

Denise Nixon

Post Registration Education Commissioning Coordinator, Department of Health NI

Shane Elliott

Housing and Health Lead, Department of Health/Northern Ireland Housing Executive

John Stevens

Chair, The Academy for Healthcare Science

Claire Marshall

Experience of Care Lead – Clinical Programmes Experience of Care Team, NHS England

Hedley Glencross

Former Lead Biomedical Scientist, Portsmouth Hospitals NHS Trust

Dominic Harrington

Chief Scientific Officer, Synnovis

Elaine Cloutman-Green

Consultant Clinical Scientist and Joint Trust Lead Healthcare Scientist, Great Ormond Street Hospital

Rob Orford

Chief Scientific Adviser for Health, Welsh Government

Delia Ripley

Deputy Chief Scientific Adviser for Health, Welsh Government

Suzanne Avington

Associate Director Allied Health Professionals, Nottinghamshire Healthcare NHS Trust

Samantha Hemingway

Head of Quality and Professions for Adults, Solent NHS Trust

Jennifer Keane

National Director Intermediate Care & Rehabilitation, NHS England

Simon Lovett

Chief Allied Health Professional, Gloucestershire Hospitals NHS Foundation Trust

Paul Chapman

National AHP Programme Manager, NHS England

Basit Abdul

Clinical Programme Lead – Pharmacy Integration and NHS Clinical Entrepreneur Fellow, NHS England

Andrew Langford

Chief Executive, The British Association for Music Therapy

Bamidele Farinre

Chief Biomedical Scientist, MPUV Scientific Lead, Espirita, Acacium Group

Joseph Halstead

Lead Bioinformatician, Cardiff and Vale University Health Board

Angharad Williams

Clinical Research Practitioner, West Suffolk NHS Foundation Trust

Ruth Thomsen

Scientific Officer, and Audiologist and Clinical Leadership Fellow, NHS England

Tony Fisher

Consultant Clinical Scientist and Non-Executive Director, The Academy for Healthcare Science

Keith Ison

The Academy for Healthcare Science; Former Head of Medical Physics at Guy's and St Thomas' NHS Foundation Trust,

Deirdre Brooking

Workforce Development Lead, LCRN North Thames / National Institute for Health Research

Penny Williams

Research Delivery Manager, North East and North Cumbria / National Institute for Health Research

Hannah Reay

Head of Learning & Workforce Development, LCRN West Midlands / National Institute for Health Research

Suzanne Martin

Professor Occupational Therapy, Ulster University; Senior Fellow, Higher Education Academy; Fellow, Royal College of Occupational Therapists

Rachael Moses

National Clinical Advisor Respiratory inc Long COVID, NHS England, and Head of Clinical Leadership Development, NHS Leadership Academy

Tracy MacInnes

Policy Officer (Scotland), British Dietetic Association

Ruth Crowder

Chief Allied Health Professions Advisor, Welsh Government, Former Chief Biomedical Scientist, Western Sussex Hospitals NHS Trust, and Founder of Harvey's Gang

