

The Academy for Healthcare Science award for inspiring the healthcare science workforce of the future

Sponsored by the Academy for Healthcare Science

This award recognises and rewards people who are committed to inspiring the next generation of healthcare scientists. We are looking for submissions from individuals or departments demonstrating their commitment to providing outstanding clinical learning and development opportunities, forging strong links with education providers, using inventive ways to promote healthcare science careers, offering innovative development programmes to help students in their early careers or devising initiatives to capture talent within the workforce.

Our aim is to showcase the essential contribution that healthcare scientists make to attracting and developing a workforce which displays the behaviours and values that are needed to deliver professional care. All those who play a part in inspiring healthcare scientists and support staff (clinical managers, department managers, educational supervisors and HR managers) are invited to nominate individuals or teams for this award.

Criteria

- Innovation
- Measurable achievements
- Expected benefits including cost-effectiveness
- Adaptability and sustainability
- Transferability
- Leadership and team working.

Submission statements

- 1 Describe what the nominee has done: how it is innovative? (200 words)
- 2 What has been the feedback and how have they evaluated success? (100 words)
- 3 What measures have been taken to ensure the innovation's adaptability and sustainability? (100 words)
- 4 How far is it transferable to other units and departments? (50 words)
- 5 How has the innovation impacted on the department or service provided? (50 words)

Entries must be submitted online via the website forms – go to www.AHAwards.co.uk/uk/ and follow the **ENTER NOW** links.

KEY DATES

Awards launch: October 2022

Closing date for entries: 24 Jan 2023

Judging: w/c 27 Feb & w/c 6 Mar 2023

Celebration Lunch: London 21 April 2023

FIND OUT MORE

Daniel.Gaskin@nhsbt.nhs.uk
selma.turkovic@nhsbt.nhs.uk
anas.nasir@nhs.net



2022 WINNER AND FINALISTS

WINNER

Danny Gaskin & Selma Turković, Biomedical Scientists & Patient Blood Management Practitioners Patient Blood Management Team, NHS Blood and Transplant, and Anas Nasir, Biomedical Scientist Viapath UK

The team developed an innovative, remote, cost-effective education group, free to access for newly qualified biomedical scientists, those new to transfusion science and students. The Biomedical Scientist Empowerment and Discussion Group (BMSEdG) aimed to address the need for an on-going programme of training, education and continuing professional development for early career healthcare scientists working in blood transfusion during the SARS-CoV-2 pandemic. Meeting monthly, a subject matter expert is invited to deliver a lecture on a pertinent area of blood transfusion, before opening the session for discussion between delegates and speakers. The curriculum considers key industry recommendations. The curriculum is also informed by users, adapting in response to feedback provided by attendees. As of November 2021, there have been 14 sessions. Membership of the BMSEdG has now reached over 1550 including healthcare scientists from across the United Kingdom as well as overseas. Operating remotely improves equity of access throughout the workforce. This initiative is innovative as the first specialism specific national group targeted at new qualified

scientists. The BMSEdG is now becoming embedded into standard Trust training and education programmes in blood transfusion laboratories demonstrating its strong success.

“The Patient Blood Management Team’s innovation was beautiful in its simplicity and was able to demonstrate a clear impact to colleagues working within NHSBT, NHS and other Transfusion laboratories, which not only supports education of their colleagues, but also patient safety.”

FINALISTS



Primary care audiology team

Primary care practitioners

Swansea Bay University Health Board

The service has developed a parallel working model delivering a first contact hearing and tinnitus service along with an efficient and modern integrated wax removal pathway by introducing an Associate Practitioner to work alongside an Advanced Practitioner. It is the first of its kind in Audiology and an example of leading the way in the modern community health care setting. This service is an excellent example of the modern “Advanced Practitioner” role and enables them to work at the top of their clinical licence, making independent autonomous decisions whilst dealing with complex cases and preventing onward referrals in to secondary care.

Nicola.Phillips@wales.nhs.uk



Alastair Watson, senior clinical photographer and video lead and the clinical illustration team

The Royal Wolverhampton NHS Trust

The team created a series of interactive 360 Virtual Tours of several departments within the hospital to inspire future generations who may look for healthcare careers in the future. Students can click on the staff within the tours to find out more and discover the pathway to that particular role. Photo galleries, videos, links to external web pages are all incorporated into the tours in order to create a fully immersive experience.

alastair.watson@nhs.net



FIND OUT MORE

Basit.abdul@england.nhs.uk

2021 WINNER AND FINALISTS

WINNER

**Global Clinical Engineering Day Team,
Basit Abdul and NHS Trusts in the UK**

The team acted quickly to produce an excellent '[Global Clinical Engineering Day' video](#). This became the UK's contribution to an international celebration, at a time where the profession was under pressure to deliver support to the pandemic response.

The approach taken, the number of organisations, and the quality of the output were all innovative, and stood out versus previous contributions from the UK. Many contributed, but Basit in particular had to drive this exercise forward and was crucial in making this happen. The feedback can be seen in the YouTube comments, but also in the discussion of the video across the regional and national clinical engineering networks that formed to coordinate pandemic response.

The video was a series of vignettes that can be split down and used for professional awareness, educational material and marketing. This was a deliberate and considerate decision by the team, and meant that Clinical Engineers across the country will be able to make use of the content for years to come. By featuring contributions across the country, it shows a breadth of perspectives that makes the content transferable. It was also designed to introduce lay audiences to the work of Clinical Engineers.

“The judges thought this was a highly innovative initiative, which was wide reaching both inside and outside of his immediate field. Basit showed considerable leadership in developing the film and using the opportunity to raise the profile of clinical engineering within his own Trust and beyond.”

FINALISTS

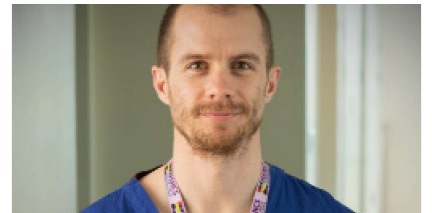


Transfusion Laboratory Services

Manchester University NHS Foundation Trust

The Nightingale Hospital North West is a temporary field hospital, built and run by the NHS and the military. The Transfusion service was asked to supply on-site O D Negative red cells for emergency blood provision and developed a quick, creative and safe way to bring the blood closer to the patients. This solution was Golden Hour TM Technology, originally designed for the military to protect temperature sensitive components in the battlefield. Each Credo Cube was 'Blood provision in a box,' contained giving sets and all documentation and information about transfusion, traceability, transfer and investigation of a transfusion reaction.

Emma.Copperwaite@mft.nhs.uk



Dr James Willis,

Lead in Echocardiography and HSST trainee,

Royal United Hospitals Bath NHS Foundation Trust

James is an inspirational healthcare scientist. He worked as a cardiology clinical tutor for the local University for many years, demonstrating inspirational teaching and clinical standards while employed as a full-time cardiac physiologist. James leads the team from the front, setting exceptional standards and continues to show repeated improvements in the service and care. James' professionalism, dedication to the team is second to none; he leads with compassion, science and research at the front of all he delivers.

james.willis@nhs.net

